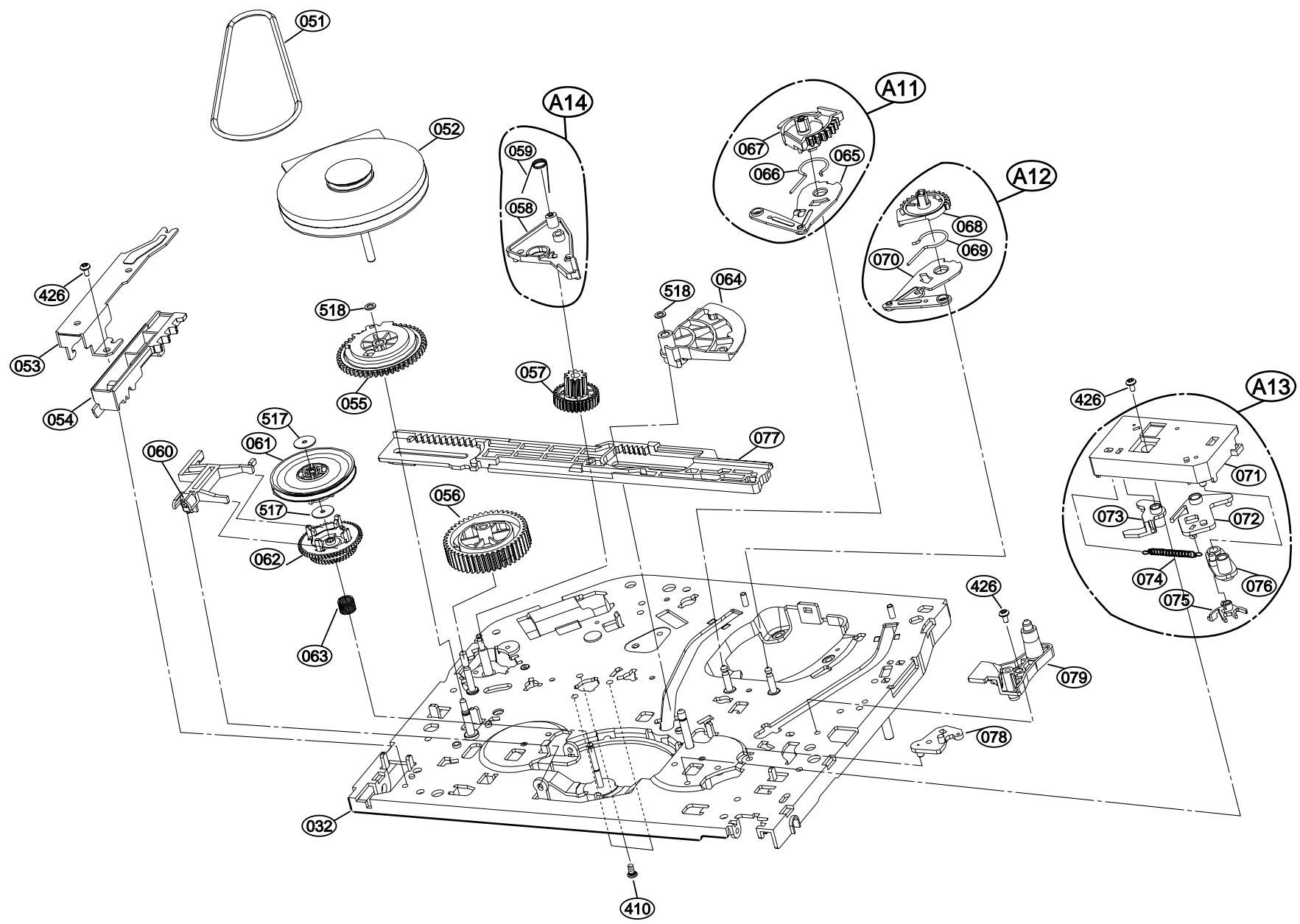


## MECHANISM MAIN PARTS LIST 1/3

DESCRIPTIONで判断できない物は "REFERENCE NAME LIST" を参照してください。  
 If can't understand for Description please kindly refer to "REFERENCE NAME LIST".

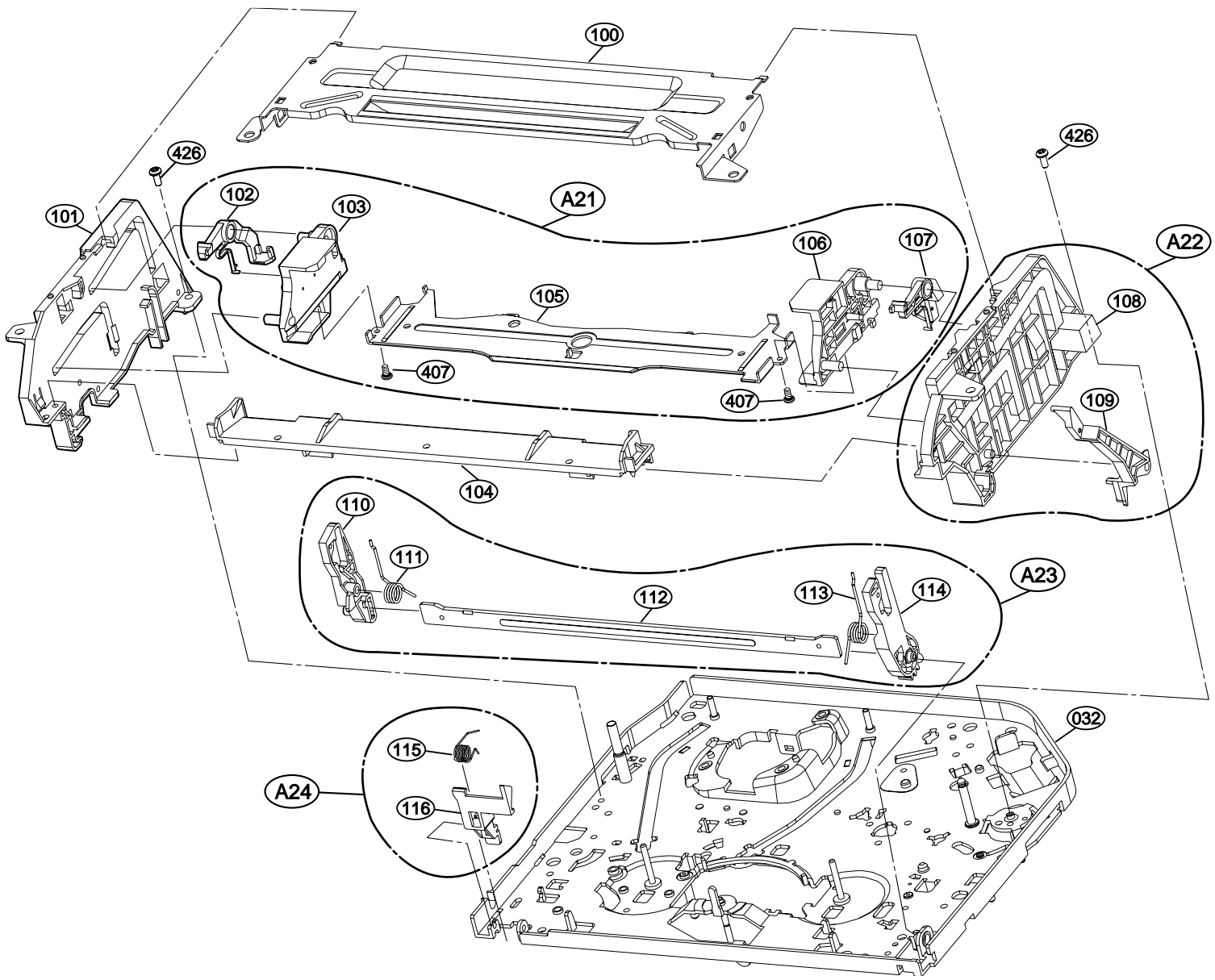
REF. NO	PART NO.	KANRI NO.	DESCRIPTION	REF. NO	PART NO.	KANRI NO.	DESCRIPTION
001	S7-23R-010-6D0		DRUM ASSY SUB D33-6CH	026	S6-81R-000-7A0		MOTOR ASSY L/D
002	S6-80R-B00-04A		MOTOR (MECH)	027	S4-70R-002-5A0		GEAR WHEEL
003	S9-30R-010-8A0		HOLDER FPC(6CH)	028	S4-08R-000-2A0		REEL T
004	S0-06R-001-4A0		CAP,FPC	029	S2-61R-001-1A0		ARM ASSY PINCH
005	---		CAP,A CLEANER	031	S9-70R-005-2A0		SPRING TENSION
006	---		ROLLER CLEANER	032	S1-41R-000-2A0		CHASSIS ASSY
007	---		ARM CLEANER	401	87-261-071-410		PAN HEAD SCREW 2.6-4
008	S9-70R-004-3A0		SPRING T/UP	406	87-261-094-410		PAN HEAD SCREW 3-6
009	S2-60R-001-1A0		ARM T/UP	409	87-741-095-410		SCREW,PAN HEAD 3.0-8.0
010	S7-70R-000-4A0		BAND ASSY TENSION(MECH)	504	S3-540-01B-000		WASHER,P.S 3.1-6-0.5
011	S2-61R-000-4A0		ARM ASSY TENSION	A01	---		DRUM(CIRC) ASSY D33-6CH
012	---		BASE ASSY P2	A02	---		ARM ASSY
013	S0-41R-000-4A0		BASE ASSY P3	A03	S2-61R-000-3A0		ARM ASSY CLEANER
014	S0-41R-000-7A0		BASE ASSY P4	A04	---		BRACKET ASSY L/D MOTOR
015	S8-70R-000-1A0		OPENER LID				
016	S0-41R-000-5A0		BASE ASSY A/C HEAD				
017	S4-08R-000-1A0		REEL S				
018	S9-70R-005-4A0		SPRING SB				
019	S4-21R-000-3A0		BRAKE ASSY S				
020	S9-70R-005-3A0		SPRING TB				
021	S4-21R-000-4A0		BRAKE ASSY T				
022	S5-238-33B-000		HEAD FE D33				
023	S9-80R-001-0A0		SUPPORTER CST				
024	S2-61R-000-9A0		ARM ASSY IDLER-J				
025	S8-10R-005-3A0		BRACKET L/D MOTOR				



## MECHANISM MAIN PARTS LIST 2/3

DESCRIPTIONで判断できない物は "REFERENCE NAME LIST" を参照してください。  
 If can't understand for Description please kindly refer to "REFERENCE NAME LIST".

REF. NO	PART NO.	KANRI NO.	DESCRIPTION	REF. NO	PART NO.	KANRI NO.	DESCRIPTION
032	S1-41R-000-2A0		CHASSIS ASSY	069	---		SPRING L/D
051	S4-00R-000-5A0		BELT CAPSTAN	070	---		LEVER P2
052	S6-80R-000-2A0		MOTOR(MECH)	071	---		BRACKET JOG
052	S6-80R-A00-03A		MOTOR(MECH)	072	---		LEVER JOG
053	S9-74R-001-8A0		GUIDE RACK F/L	073	---		LEVER SLOW
054	S4-70R-003-7A0		GEAR RACK F/L	074	S9-70R-004-9A0		SPRING JOG
055	S4-70R-003-3A0		GEAR DRIVE	075	---		GEAR JOG
056	S4-70R-003-2A0		GEAR CAM	076	---		ARM JOG
057	S4-70R-003-6B0		GEAR CONNECT	077	S3-00R-015-7A0		PLATE SLIDER
058	---		BRAKE CAPSTAN	078	S5-10R-002-2A0		LEVER TENSION
059	S9-70R-005-9A0		SPRING CAPSTAN	079	S0-40R-001-8A0		BASE TENSION
060	S5-10R-002-5A0		LEVER F/R	410	SA-PF0-262-218		SCREW,PAN HEAD 2.6-6.8
061	S2-65R-000-2A0		CLUTCH ASSY	426	87-261-094-410		PAN HEAD SCREW 3-6
062	S4-70R-004-4A0		GEAR ASSY UP/D	517	SW-ZZR-000-4B0		WASHER STOPPER
063	S9-70R-005-1A0		SPRING UP/D	518	SW-ZZR-000-4A0		WASHER STOPPER
064	S4-70R-003-4A0		GEAR SECTOR	A11	S4-70R-002-8A0		GEAR ASSY P3
065	---		LEVER P3	A12	S4-70R-002-6A0		GEAR ASSY P2
066	---		SPRING L/D	A13	S8-11R-001-2A0		BRACKET ASSY JOG
067	---		GEAR P3	A14	---		BRACKET ASSY CAPSTAN
068	---		GEAR P2				



## MECHANISM MAIN PARTS LIST 3/3

DESCRIPTIONで判断できない物は "REFERENCE NAME LIST" を参照してください。  
 If can't understand for Description please kindly refer to "REFERENCE NAME LIST".

REF. NO	PART NO.	KANRI NO.	DESCRIPTION	REF. NO	PART NO.	KANRI NO.	DESCRIPTION
032	S1-41R-000-2A0		CHASSIS ASSY	114	---		ARM F/L(R)
100	S3-01R-002-9A0		PLATE ASSY TOP	115	S9-70R-005-0A0		SPRING SWITCH
101	S8-10R-005-6A0		BRACKET SIDE(L)	116	S5-10R-002-0A0		LEVER SWITCH
102	---		LEVER STOPPER(L)	407	87-841-034-210		SCREW PAN HEAD 2.0-5.0
103	---		HOLDER SIDE(L)	426	87-261-094-410		PAN HEAD SCREW 3-6
104	S9-74R-001-9A0		GUIDE CST	A21	S9-31R-001-5A0		HOLDER ASSY CST
105	---		HOLDER CST	A22	S8-11R-001-4A0		BRACKET ASSY
106	---		HOLDER SIDE(R)	A23	S2-61R-001-0A0		ARM ASSY F/L
107	---		LEVER STOPPER(R)	A24	---		LEVER ASSY SWITCH
108	---		BRACKET SIDE(R)				
109	---		OPENER DOOR				
110	---		ARM F/L(L)				
111	---		SPRING F/L(L)				
112	---		BODY F/L				
113	---		SPRING F/L(R)				